

Experience... world class exhibitions

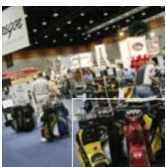


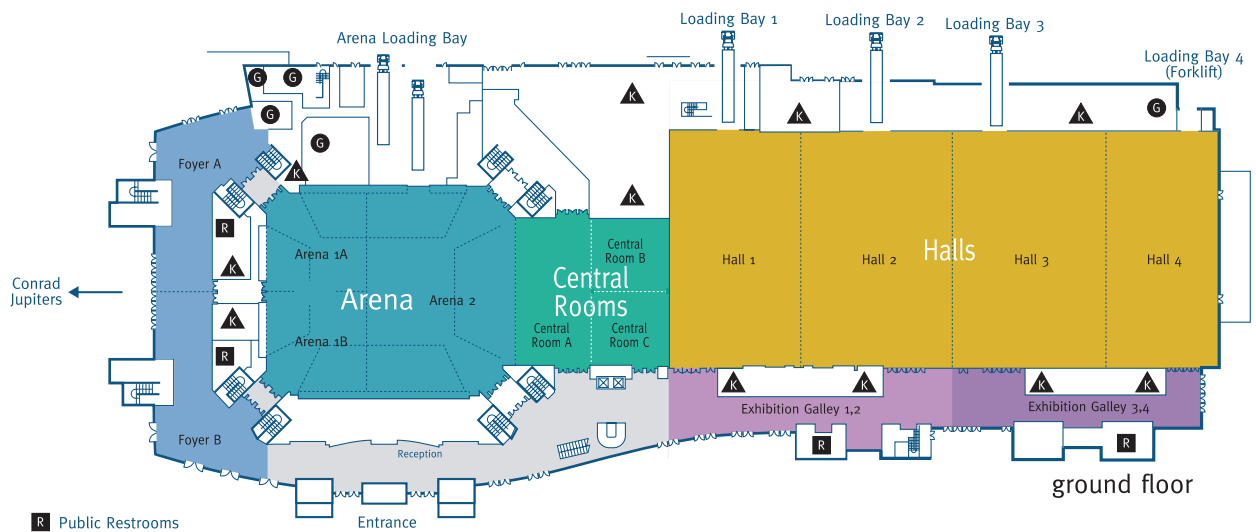
With an estimated catchment area of almost 1 million people, the Gold Coast Convention and Exhibition Centre in Queensland's south-east is ideally located for exhibitions, trade shows and consumer shows with a difference. Easily accessible for Brisbane, Gold Coast and Tweed Coast audiences, the GCCEC offers up to 10,000m² of usable exhibition space. With onsite catering and theming, over 1,300 covered car parking spaces and our experienced Sales and Events team at your disposal, the stage is set for a truly world class event.

"Exhibiting a new standard of quality, service and flexibility"

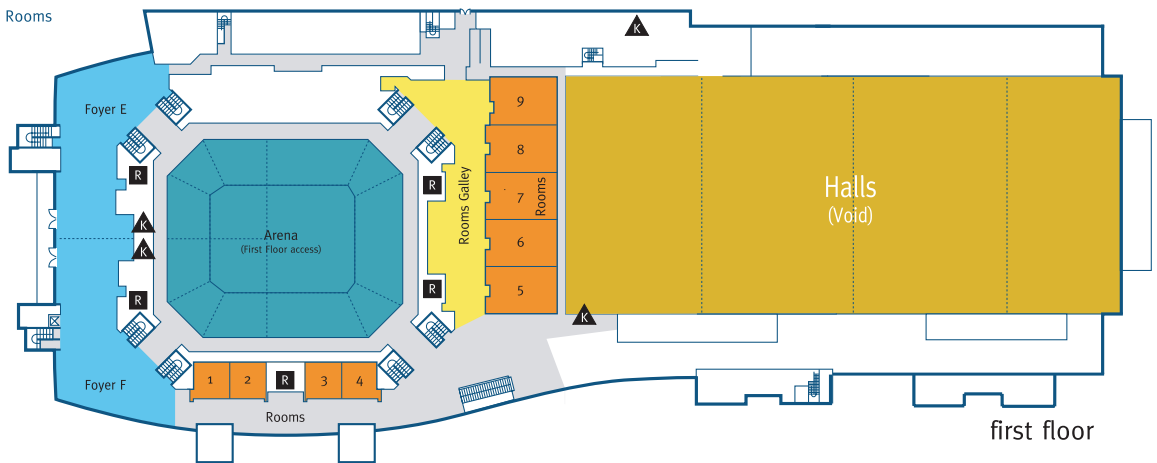
Our flexible exhibition space easily transforms from a boatie's paradise to a golfer's mecca and beyond, with regional and national clients enjoying our unique blend of space, service and imagination.

- Contemporary, flexible design
- Over 15,800m² of exhibition space available over two levels
- Space for 580 booths on the ground floor
- Four Exhibition Halls totalling 6,345m² with 10m ceiling height
- Arena 2,182m² with 14m ceiling height
- Central Rooms 1,068m² with 3.7m ceiling height
- Floorpits with 3 phase power located throughout the entire ground floor space
- Floorpit access for water and waste
- Semi trailer access directly into Halls through 4 loading bays
- Award winning onsite catering
- Wireless broadband access throughout
- Professional AV and theming technicians
- Onsite box office
- Undercover car parking spaces





- R** Public Restrooms
- K** Kitchens
- G** Green Rooms



Disclaimer: All capacities listed are to be used as a "guide only" Staging and audio visual requirements may reduce capacities

Rooms	Dimensions per room (m)	Square Metres (m²) per room	Square Feet per room	Ceiling Height (m)	Banquet Maximum N/S/D	Theatre W/S	Classroom W/S	Cocktail 1 pax : 1m²	Exhibition Booths 3m x 2.4m
*Arena	52.4 x 44	2182	23487	14	-	6021	-	-	-
*Arena 1	22 x 44	904	9730	14	-	2500	-	-	-
*Arena 2	30.4 x 44	1278	13756	14	-	3500	-	-	-
*Arena 1A or 1B	22 x 22	452	4865	14	-	1250	-	-	-
+Arena	59.5 x 44	2600	27986	14	1640	-	1620	2600	157
+Arena 1	22 x 44	904	9730	14	700	-	580	900	-
+Arena 2	30.3 x 44	1278	13756	14	1020	-	930	1280	90
+Arena 1A or 1B	22 x 22	452	4865	14	350	-	291	450	-
Central Room	32.6 x 32.7	1068	11496	3.7	800	1360	714	1070	64
Central Room A	16.8 x 32.7	552	5941	3.7	340	750	378	550	32
Central Rooms B or C	15.7 x 16.3	258	2777	3.7	160	290	147	260	16
Halls 1,2,3,4	123.8 x 51.2	6345	68297	10	4600	-	-	6245	390
Hall 1	30.2 x 51.2	1550	16684	10	1120	-	980	1550	91
Hall 2	34 x 51.2	1745	18783	10	1270	-	1100	1720	105
Hall 3	34.6 x 51.2	1775	19106	10	1290	-	1120	1750	109
Hall 4	24.8 x 51.2	1275	13724	10	920	-	800	1250	80
Rooms 1,2,3 or 4	7.6 x 8.1	60	645	3	40	50 N/S	27 N/S	60	-
Rooms 5,6,7 or 8	15.8 x 10.5	162	1743	4	110	200	102	160	-
Room 9	14.7 x 10.7	152	1636	4	100	180	90	150	-
Foyers A and B		1200	12912		400	-	-	1200	12
Foyers E and F		1400	15064		400	-	-	1400	20
Rooms Gallery		650	6994		N/A	-	-	650	6
Exhibition Galley 1,2		727	7822		N/A	-	-	800	10
Exhibition Galley 3,4		574	6176		N/A	-	-	600	10

W/S = with stage
 N/S = no stage
 N/S/D = no stage or dancefloor
 N/A = not available

* denotes auditorium-style
 + denotes using the flat floor area
 - denotes upon application

Based on stage size 3.75m x 2.4m
 Based on booth size 3m x 2.4m
 Based on banquet tables of 10 pax

