

How to get online...

- 1 Ensure your wireless enabled laptop or device is turned on and you have enabled the wireless switch/button
- 2 Open your wireless connection list.
- 3 Navigate to GCCEC from the list of available wireless networks. Validate you have connected to the GCCEC wireless network.

- 4 Open your Internet Browser
Our splash page will appear



- 5 Continue to review plans and pricing. Enter credit card and billing information. We accept Visa, Mastercard & AMEX. If you don't have a credit card during normal office hours you can purchase a prepaid card from GCCEC's reception and enter that code in the 'pre-paid code section'

- 6 Proceed to receiving your receipt and...

You're Online!

FAQs

How secure is it?

GCCEC uses stringent security protocols and industry standard encryption. All credit card transactions are processed using valid SSL certificate and no details are stored by GCCEC. Although we have these measures in place we strongly recommend the use of a personal firewall and antivirus. For more information on security please read the terms and conditions. These terms can be found at the bottom of the log-on page.

How fast is it?

The GCCEC wireless infrastructure was designed and deployed as a full wireless A,B,G,N network. Meaning, we are capable of wireless N speeds. The system has been configured for 1000 concurrent users, but can handle more than that. The speed on your computer is determined by what plan you purchase.

What if i'm experiencing problems?

If you are online and noticing problems please visit:
<http://public.gccec.com.au>
otherwise contact centre reception during normal business hours or contact your event organiser.

Where can I use it?

WiFi can be used anywhere within GCCEC, and you are free to roam while connected

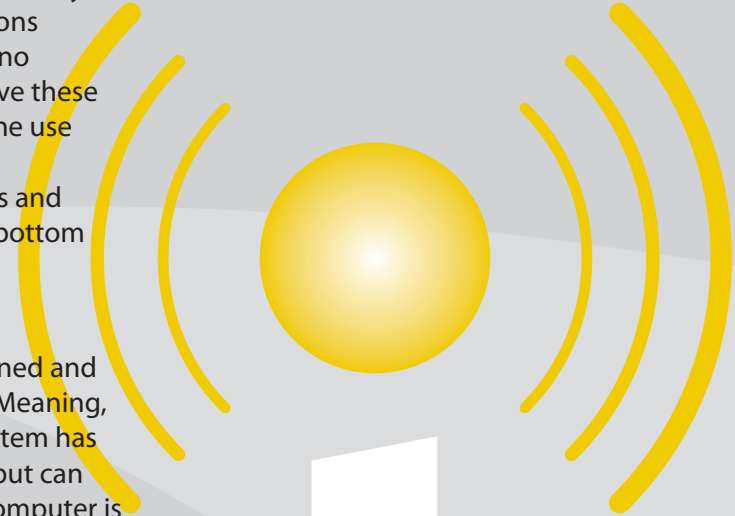
How can I check how much time I have left?

Once you have connected you can navigate to <http://public.gccec.com.au> and click the 'my account' tab at the top of the page.

Can I get a cable or a faster speed?

Yes, Please contact GCCEC reception or email techservices@gccec.com.au for more details

For more info and terms visit: <http://public.gccec.com.au>



WiFi

experience the difference

Need more help to set up?



Lastly to configure Internet Explorer, open the web browser and go to tools. Select Internet Options and the tab Connections. Under LAN settings, open the window for Local Area Network (LAN) settings.

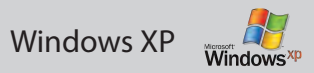
Ensure the following is NOT selected

- Use automatic configuration script
- Use a proxy server for your LAN

Then Ensure you SELECT

- Automatically detect settings

Select OK, then Close and Re-open your browser



1. Go to Start, Control Panel then Network Connections. Right click on wireless network adaptor and select view available wireless networks
2. Highlight GCCEC in the Choose Networks section (fig. A). If no wireless network is detected, ensure your wireless switch is on and the network list is refreshed. Click connect.
3. Back in the Network Connections window, right click on the wireless adaptor and select Properties.
4. Click on the General tab, then highlight the Internet Protocol TCP/IP option (fig. B) and click on Properties.
5. Select Obtain an IP address automatically and obtain DNS server address automatically as per (fig. C) Select OK



fig. A

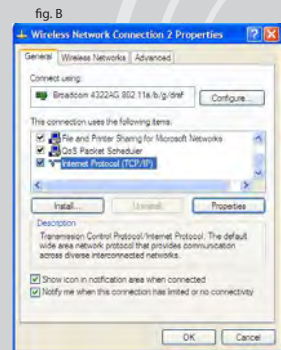


fig. B

fig. C



1. Go to Start, Control Panel, Network Sharing Center.
2. Click on Manage Network Connections on the left. If the Wireless Icon is greyed out ensure your wireless switch is enabled. Right click on your Wireless Network Connection and select Properties (fig. 1)
3. Highlight Internet Protocol Version 4 (TCP/IP) and select Properties (fig. 2). Ensure all settings are as per (fig. 3)
4. Select ok until you return to Network Connections window. Select Connect To, at the top of window. find GCCEC in the list (fig. 4), highlight it and select Connect. Verify its "connected". Then select OK

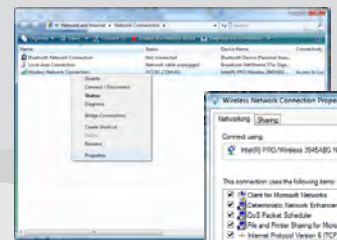


fig. 1

fig. 2



fig. 3

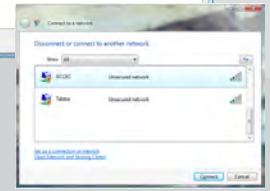
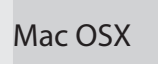


fig. 4



1. Turn Airport On and select GCCEC
2. Open your browser